



SWALE OCEANOGRAPHIC

LinkQuest – ADCPs

FlowQuest Acoustic Current Profilers

FlowQuest is a line of Acoustic Current Profilers manufactured by LinkQuest Inc., a company renowned for its innovation, capability and product quality. The FlowQuest current profilers are ideal for measuring currents and flows in oceans, harbours, lakes and rivers. With its capability for significantly longer range, standard depth rating and seamless integration with third-party sensors and LinkQuest acoustic modems, the FlowQuest system is not just a current profiler. It also serves as a focal point for your underwater deployments.

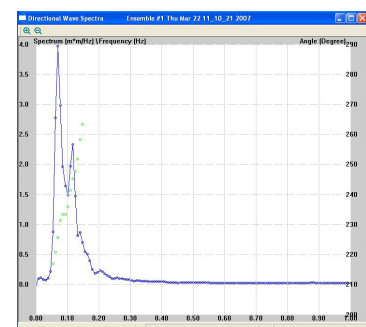
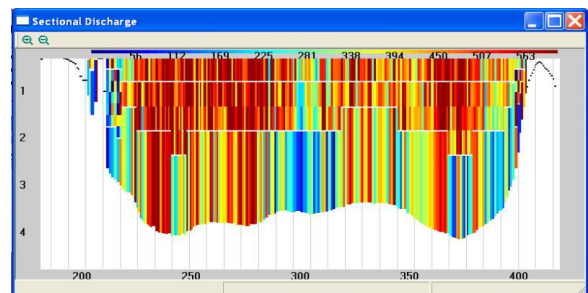


- 75, 150, 300, 600, 1000 or 2000 khz Operating Frequency
- Range up to 900 metres
- Accuracy up to 0.25% +/- 2.0 mm/s
- Highly Robust Acoustic Doppler Technology
- Significantly Longer Range When Compared Against Similar Products
- Highly User Friendly And Cost Competitive
- Standard Depth 800m (optional Depth 1500, 3000 or 6000m)
- Bottom Tracking Option For Vessel-mounted Applications
- Optional **Wavequest** Directional Wave Spectrum Measurement Function
- Optional Discharge Measurement Function
- Data Fusion Function To Interface To Multiple Third Party Sensors
- Optional Integrated Linkquest High Speed Acoustic Modem
- Optional Integrated Relocation Transponder
- Low Power Consumption DSP Technology

FlowQuest Studio Windows software is an integrated environment for FlowQuest configuration, real-time data display and off-line data analysis.

FlowQuest acoustic current profilers have the optional Discharge Measurement function which can be used to measure the discharge in rivers, estuaries, natural streams and constructed channels. This function comes in the form of an option for the FlowQuest 300, 600, 1000 & 2000 acoustic current profilers.

FlowQuest acoustic current profilers also have the optional WaveQuest Directional Wave Spectrum Measurement function which can be used to measure wave directions, periods and heights. This function is offered as an option with the FlowQuest 600 and 1000 acoustic current profilers.



SWALE TECHNOLOGIES Ltd

Unit 51G, Rm48 Whitehill & Bordon Enterprise Park, Budds Lane, Bordon, GU35 0FJ, UK
Tel: +44 (0)1420 473334 Email: Sales@swaletechnologies.com www.swaleocean.co.uk