



# SWALE OCEANOGRAPHIC

## Teledyne Benthos

### Benthos

# Acoustic Releases

## Wireless Recovery of Subsea Devices



**Teledyne Benthos** manufactures a wide range of Acoustic Releases for shallow, mid and deep water operations. Acoustic releases have been used for decades as a safe and reliable means of deploying and recovering critical subsea instrumentation. A secure acoustic command is sent from the topside unit to the subsea unit to release up to 25 tons of in-line instrumentation to the surface for recovery. All of Teledyne Benthos acoustic releases can be operated from a universal topside unit, which provides access to a wide spectrum of system capabilities and diagnostics to ensure ease of operation and successful instrumentation recovery. With over 50 years of experience in undersea applications, Teledyne Benthos acoustic releases have become synonymous with quality and dependability, even in the harshest environments.

## UNIVERSAL DECK BOX UTS-9400

The Teledyne Benthos Universal Deck Box has been designed to work with all Benthos acoustic releases, transponders and modems, including the SMART products.

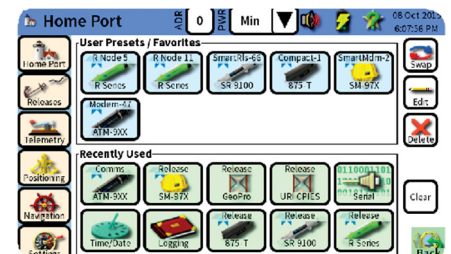


### NEW Universal Top Side (UTS)

The NEW UTS-9400 is a complete single-unit replacement for all previously offered Teledyne Benthos acoustic deck units. This new deck box is used to operate all standard acoustic releases and to control and communicate with Teledyne Benthos' full line of acoustic modems and positioning products. The UTS is the result of a focused engineering effort to devise the ideal top side unit for any level of user. From the novice user to the seasoned pro, the UTS delivers a user-friendly interface, with powerful, intuitive communication, command & control features to ensure you remain in control of your operations at all times.

### Features:

- Full color, touch screen display and intuitive menus to simplify operation
- Advanced ambient acoustic condition analysis to ensure your commands get through in even the most challenging environments
- Ability to log all sent and received commands for post processing of mission operations
- RS-232 port for direct connection to a PC or laptop
- USB port for offloading logged data and updating firmware
- Speaker for listening to acoustic signals
- AC or internal battery power
- Low frequency (LF) dunking transducer and 25 meter cable (standard)
- Up to 200 m cable available for high-reliability deep water acoustic communications
- Deck box emulation to command other vendor's products
- Portable or rack mount configurations available



# SWALE TECHNOLOGIES Ltd

Unit 51G, Rm48 Whitehill & Bordon Enterprise Park, Budds Lane, Bordon, GU35 0FJ, UK  
Tel: +44 (0)1420 473334 Email: [Sales@swaletechnologies.com](mailto:Sales@swaletechnologies.com) [www.swaleocean.co.uk](http://www.swaleocean.co.uk)

# Specifications

	<p><b>Model 875-TD Shallow Water Release</b> is a low cost, versatile acoustic release designed for recovery of underwater equipment in coastal and inland waters.</p>	<p><b>Model 875-PUB Pop Up Buoy</b> is configured with a syntactic flotation collar and line canister to mark and recover seabed equipment. 75 m 1/4" spectra line standard 2995 kg, other line lengths and diameters available.</p>	<p><b>Model R2K Mid-Water Acoustic Transponding Release</b> is a full function acoustic release in a rugged and compact stainless steel housing for use in depths to 2000 meters and loads up to 2000 kg.</p>	<p><b>Model HD Load Multiplier for Deep Releases</b> is a secondary arm to provide a 5:1 mechanical advantage when used on any Deep Release. This 22,600 kg rated device is used for deployment of anchors and underwater construction applications.</p>
				
<p><b>Depth Rating</b></p> <p><b>Release Load Rating</b></p> <p><b>Lift Load Rating</b></p> <p><b>Actuation</b></p> <p><b>Transponder Feature</b></p> <p><b>Range Accuracy</b></p> <p><b>Release Confirmation</b></p> <p><b>Tilt Indication Feature</b></p> <p><b>Battery Life (receiver)</b></p> <p><b>Battery Life (transmissions)</b></p> <p><b>Factory Set Receiver (freq.)</b></p> <p><b>Source Level (nominal)</b></p> <p><b>Weight — In air</b></p> <p><b>— In water</b></p> <p><b>Dimensions</b></p> <p><b>Construction</b></p> <p><b>Accessories</b></p>	<p>500 m</p> <p>180 kg</p> <p>455 kg</p> <p>High torque motor</p> <p>2-3 km slant range</p> <p>1 m</p> <p>Yes (acoustic)</p> <p>—</p> <p>1 year alkaline</p> <p>—</p> <p>9-14 kHz</p> <p>167 db ref mpa @ 1</p> <p>4.5 kg</p> <p>1.4 kg</p> <p>48 cm length</p> <p>11.4 cm dia. housing</p> <p>PVC, fiberglass, (stainless steel) 875-TD</p> <p>875-TD Spare Battery (B846-0258)</p> <p>875 Drop Link (0220-008)</p> <p>Spare-Magnet (B-855-152)</p>	<p>305 m</p> <p>—</p> <p>—</p> <p>High torque motor</p> <p>—</p> <p>—</p> <p>—</p> <p>6 months (1 yr. w/lithium)</p> <p>—</p> <p>7-15 kHz</p> <p>—</p> <p>15 kg</p> <p>7 kg positive</p> <p>30 cm dia. Collar</p> <p>50 cm length</p> <p>PVC, syntactic foam</p> <p>875-SB Alkaline Battery (B-855-147)</p> <p>875-LI-SB Lithium Battery (B-855-157)</p> <p>Spare Magnet (B-855-152)</p>	<p>2000 m</p> <p>2000 kg</p> <p>2000 kg</p> <p>High torque motor</p> <p>5-10 km slant range</p> <p>Positive via digital signal</p> <p>0-180° in 1° increments</p> <p>4 years</p> <p>4 years</p> <p>9-14 kHz</p> <p>185 dB ref 1 mPa @ 1m typical</p> <p>18 kg</p> <p>14 kg</p> <p>66 cm length</p> <p>15 cm dia. housing</p> <p>stainless steel (ferrallium 255)</p> <p>R2K Alkaline Battery (C-270-388)</p> <p>866-SL Drop Link (B-855-124)</p> <p>866-BA Bar Anode (A-855-139)</p> <p>866-A Tandem Release Mounting Kit (B-855-197)</p> <p>866-ORING Kit (866-ORING-Kit)</p>	<p>12000 m</p> <p>5000 kg</p> <p>5000 kg</p> <p>High torque motor</p> <p>&lt;12 km slant range</p> <p>Positive via digital signal</p> <p>0-180° in 1° increments</p> <p>4 years</p> <p>4 years</p> <p>9-14 kHz</p> <p>185 dB ref 1 mPa @ 1m typical</p> <p>36 kg</p> <p>28 kg</p> <p>93.7 cm length</p> <p>16.4 cm dia. housing</p> <p>stainless steel (17-4 PH)</p> <p>R12K Alkaline Battery (C-270-388)</p> <p>Drop Link (B-855-186)</p> <p>R12K Bar Anode (A-855-82-1)</p> <p>R12K ORING Kit (865-ORING-Kit)</p>
				<p>12,000 m</p> <p>22,600 kg</p> <p>22,600 kg</p> <p>High torque motor</p> <p>&lt;12 km slant range</p> <p>Positive via digital signal</p> <p>0-180° in 1° increments</p> <p>4 years</p> <p>4 years</p> <p>9-14 kHz</p> <p>185 dB ref 1 mPa @ 1m typical</p> <p>121 kg</p> <p>104 kg</p> <p>126 cm length</p> <p>46 cm width</p> <p>High strength carbon steel (Dims include release)</p> <p>008847 Drop Link</p>