



# SWALE OCEANOGRAPHIC

## BathyThermograph System (BTS / XBT)

The BathyThermograph System (BTS) is a system for obtaining records for each depth temperature and sound velocity by the probe of BTP(XBT) falling in water. BTS consists of expendable probe to measure underwater temperature, launcher shooting probe and recorder as data acquisition, recording, processing.



### Package

- BathyThermograph Probe (BTP- 4,6,7,10)
- BathyThermograph Launcher (BTL-1/Hand-held type, BTL-2/Hull mounted type)
- BathyThermograph Recorder (BTR-1/Rack type, BTR-2/Portable type, BTR-3/Console type)

### System Flow



### Specifications

#### BTR (Recorder)

Operating Depth: Max 1,830m

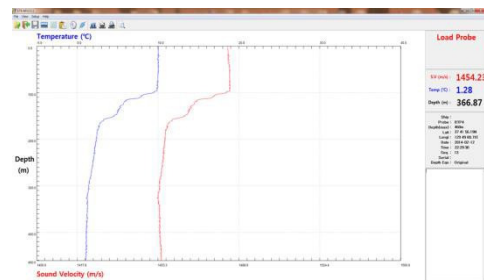
- Operating Speed: 30 Knots (Using BTP-4)
- Vertical Resolution: 64cm
- Temperature Accuracy:  $\pm 0.15^{\circ}\text{C}$
- Temperature Range:  $- 2.2^{\circ}\text{C} - 35.6^{\circ}\text{C}$

#### BTP (Probe)

Application	Max. Depth	Rated Speed	Resolution(V)
BTP-4	460m	30 Knots	64cm
BTP-6	460m	20 Knots	64cm
BTP-7	760m	15 Knots	64cm
BTP-10	200m	10 Knots	64cm

#### Software: STX-MV

- OS: Win 7, 8
- Display Temp. info against 0.64m depth
- NMEA0183 Format Data Input Process
- Export txt file and raw data auto generation
- Velocity data 1,405~1,560m/s display



## SWALE TECHNOLOGIES Ltd

Unit 51G, Rm48 Whitehill & Bordon Enterprise Park, Budds Lane, Bordon, GU35 0FJ, UK  
Tel: +44 (0)1420 473334 Email: [Sales@swaletechnologies.com](mailto:Sales@swaletechnologies.com) [www.swaleocean.co.uk](http://www.swaleocean.co.uk)