



SWALE OCEANOGRAPHIC

Side Scan Sonar

SonarBeam® has supplied various side scan sonar systems from single, dual to multi beam. SonarTech invites you to SonarBeam® world dreaming of powerful and valuable frontier in the fields of underwater sonar equipment.



SONARBEAM - high resolution images at competitive prices.

- Single Frequency: 100, 400, 900, 1250kHz
- Dual Frequency: 100/400, 400/900, 400/1250kHz
- Multi Beam: 455kHz (3, 5 beams)
- Portable topside processor
- Compatible with Hypack/GeoDas/SonarWiz
- Real time post-processing mosaic software
- Kevlar reinforced tow cable
- Motion / Depth / Altimeter sensor



Specifications

<p>S-150P - Ultra-light weight towfish</p> 	<ul style="list-style-type: none"> • Size : 900×ø89 (mm) • Weight : 12 kg (in air) / 8.5 kg (in water) • Single Frequency : 400, 900, 1,250 kHz • Dual Frequency : 400/900, 400/1,250 kHz • Maximum Depth : 100 m • Beam Tilt : 20 degree down fixed
<p>S-150A - Light weight towfish</p> 	<ul style="list-style-type: none"> • Size : 1,026×ø89 (mm) • Weight: 16 kg (in air) /10.5 kg (in water) • Single Frequency: 400, 900, 1,250 kHz • Dual Frequency: 400/900, 400/1,250kHz • Maximum Depth: 300 m • Beam Tilt : 10, 20, 30 degree down adjustable • Altimeter Sensor : 200 kHz, 20 deg
<p>S-150D – Deep water towfish</p> 	<ul style="list-style-type: none"> • Size : 1,360×ø112 (mm) • Weight: 32 kg (in air) /25.5 kg (in water) • Single Frequency: 100 , 400 , 900 , 1250 kHz • Dual Frequency: 100/400, 400/900, 400/1250kHz • Maximum Depth: 300 m • Beam Tilt : 5, 10, 15, 20, 25 degree down adjustable • Altimeter Sensor : 200 kHz, 20 deg

SWALE TECHNOLOGIES Ltd

Unit 51G, Rm48 Whitehill & Bordon Enterprise Park, Budds Lane, Bordon, GU35 0FJ, UK
 Tel: +44 (0)1420 473334 Email: Sales@swaletechnologies.com www.swaleocean.co.uk

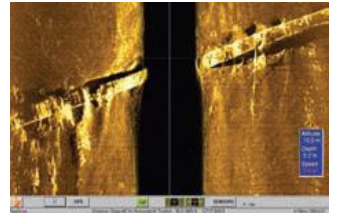
General

- **Material:** Stainless Steel
- **Beam Angle:** 100kHz: 1.2deg(H), 40deg(V) 400/900kHz: 0.3deg(H), 40deg(V) 1250kHz: 0.3deg(H), 30deg(V)
- **Transmission Pulse:** 100 kHz: 50 ~200 μ s, 400 kHz: 25~150 μ s, 900 kHz: 15~50 μ s, 1,250 kHz: 10~25 μ s
- **Swath (Max.):** 100 kHz: 1,000 m, 400 kHz: 300 m, 900 kHz: 100 m, 1250 kHz: 60 m
- **Depth Sensor:** 0.5% Full Scale
- **Motion Sensor:** Heading, Pitch, Roll
- **Features:** Safety Pin: Up to 200 kg Shear Strength, Tail Fins, Location Beacon.

RealScan

SonarBeam Real Time Operating Software

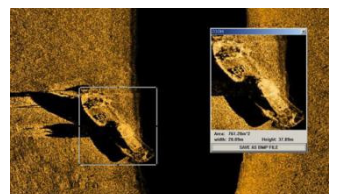
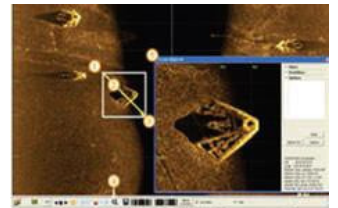
- RealScan® is the data acquisition software of SonarBeam Side Scan Sonar systems and displays the output signal from the towfish in real-time.
- Operating System: Windows XP Professional, Vista, Windows 7
 - Shows the towfish's course
 - Automatic gain control function
 - Real-Time support of the towfish's depth and altitude information
 - Real-Time support of the towfish's motion info - Roll, Pitch & Heading)
 - Image filtering & target marking
 - Transducer protection function
 - XTF File format & GPS & target image (JPG, PNG)
 - Survey route planner & screenshot function



PostScan

SonarBeam Post-Processing Software

- PostScan® is the post-processing software to analyse the acquired sonar data.
- Operating System: Windows XP Professional, Vista, Windows 7
 - Mosaic & Partial Mosaic function
 - User control of the mosaic image resolution
 - Various mosaic output formats (PNG, BMP, JPG, TIF)
 - KML file & GeoTiff file support
 - Text file support of recorded towfish information (Coordinates, altitude, depth, speed etc.)
 - Course filter function & altitude line correction function
 - Target 1x1 scale image capture
 - XYZ mosaic & image save function
 - Target measurement & image zoom function



Compatible with Hypack, SonarWiz and GeoDAS