

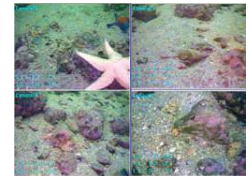
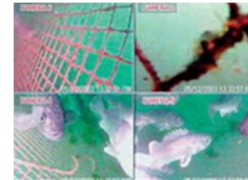


Multi-Directional Video Camera

This underwater multi-directional video camera is an unusual and useful device. With one downward looking camera and three radially looking cameras in the horizontal plane, it enables easier searches and allows simultaneous views of both the seabed (or river / lake bed) and the surrounding area. Each lens has dedicated white LED illumination and the unit has an integrated pressure sensor for quick depth correlation by the operator.

Specification and Description

Image Sensor	1/3" EX-View HAD II CCD(960H) x4
Pixels	520K
Horizontal Resolution	700 TV Lines
TV System	NTSC or PAL
Illumination	Built-in White LED - 48 pcs x 4
Min. light sensitivity	0.002 LUX
Lens	6mm (FOV 53 deg.)
Cable	Urethane coated coaxial cable
Case	Aluminium
Visible Range	Varies according to turbidity
Lamp Lifetime	Max 50,000 hours
Power Consumption	14W
Power Supply	12V, 2A dc
Dimensions	190mm(W) x 210mm(L)
Weight	10.7kg(Camera)
Operating Temperature	-10°C ~ 60°C Depth Range
Depth Range	Up to 100m
Cable Length	50m (100m optional)
Waterproof	IP68
Warranty	1 year from shipment



Key Features

- Portable system
- Four high sensitivity colour video cameras
- High intensity led illumination (x4)
- Low power consumption
- Built in depth sensor
- Manual winch with slip ring
- Integration with side scan sonar deck unit

Applications

- Inspection of piers & dams
- Observation of fish farms
- Survey of fish reefs
- Monitoring of underwater structure
- Search for the drowned personnel
- Cables & pipeline survey
- Underwater Archeology

SWALE TECHNOLOGIES Ltd

Unit 51G, Rm48 Whitehill & Bordon Enterprise Park, Budds Lane, Bordon, GU35 0FJ, UK
Tel: +44 (0)1420 473334 Email: Sales@swaletechnologies.com www.swaleocean.co.uk